

Integrated primary care workforce planning in the City of Toronto: Co-development and operationalization of a fit-for-purpose planning toolkit

Cynthia Damba¹, Sarah Simkin², Caroline Chamberland-Rowe², Nathalie Sava¹, Ivy Bourgeault²

¹Ontario Health Toronto, ²Canadian Health Workforce Network, University of Ottawa

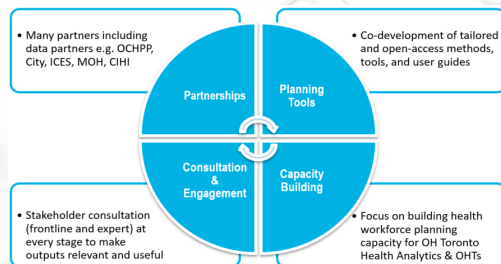


OBJECTIVES

To address disparities in access to integrated primary care in the City of Toronto, Ontario Health Toronto and the Canadian Health Workforce Network **co-developed a comprehensive regional-level workforce planning process.**

The goal was to design and operationalize an **evidence-informed toolkit for integrated, multi-professional, needs-based primary care workforce planning** tailored to Toronto's unique core needs and challenges of population mobility, population growth and physician retirement.

FACILITATORS



Broad consultation and engagement with a focus on building partnerships and capacity

APPROACH

Phase 1 – Toolkit Development (2017-2018)

Targeted review and assessment of existing models



Environmental Scan and assessment of available data sources

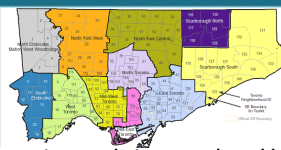
Phase 2 – Toolkit Operationalization (2019-Present)

Operationalizing a first cycle of integrated, interprofessional, needs-based primary care workforce planning

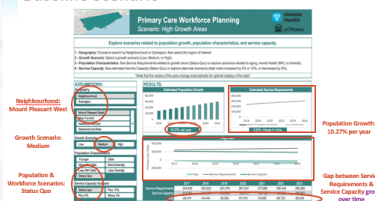
TOOLKIT

- Modules
- Maps, Tables & Charts
- Neighbourhood Profiles
- Service Requirement Dashboard
- Service Capacity Dashboard
- Interactive Dashboards

SUB-REGION AND NEIGHBOURHOOD PROFILES

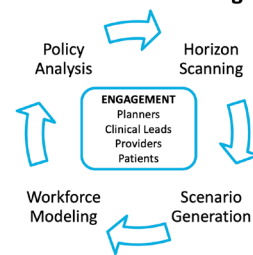


Interactive Population Growth Dashboard Baseline Scenario



METHODOLOGY

Overview of the Planning Process



Workforce modeling uses data from multiple sources to assess alignment of population health needs with workforce service capacity for each neighborhood from 2016 to 2026.

IMPACT

The approach will help OHTs, providers, planners, stakeholders:

- Understand about the **patients they are serving, where they come from, and their primary care needs**
- Estimate the **primary care resources needed** for their patients
- Identify **future emerging needs that could be addressed by OHTs**, considering population growth, demographic shifts, provider retirement, and changing practice patterns
- Inform **strategies to transform care** by testing a range of relevant scenarios
- Build capacity for primary care planning**

ACKNOWLEDGMENTS

We would like to acknowledge all our partners: Ontario Community Health Profile Partnership (OCHPP), City of Toronto, Toronto Region Primary Care Regional Council, ICES, MOH, Unity Health Toronto who contributed time, expertise and data to this project.